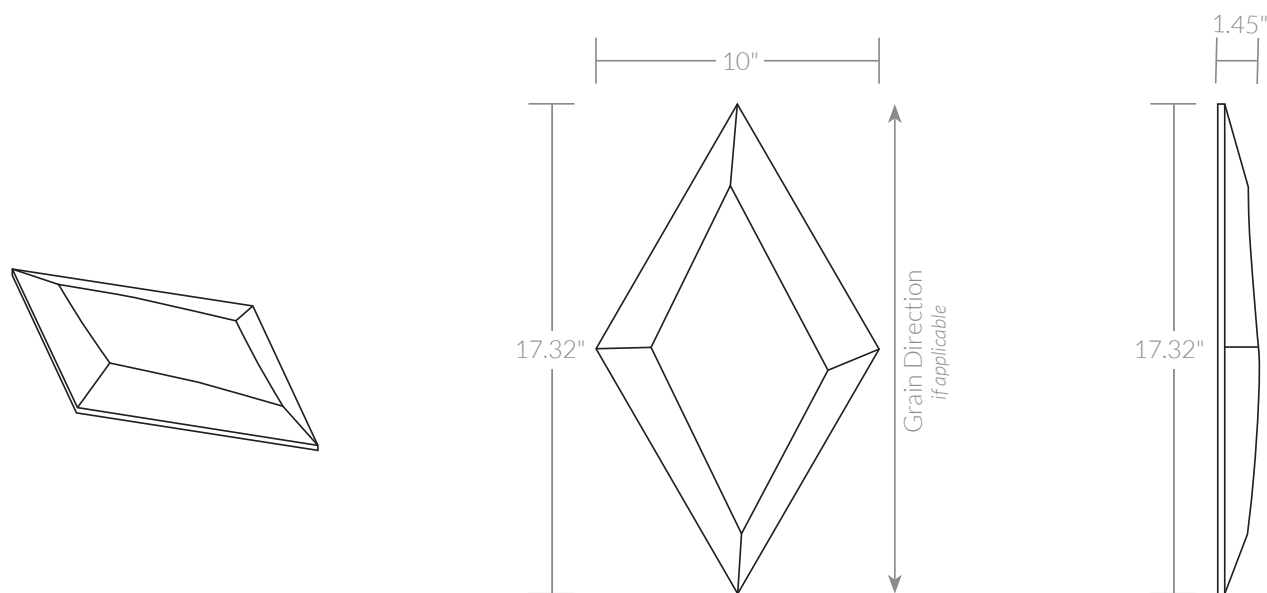


## POINT™



## PRODUCT SPECIFICATIONS

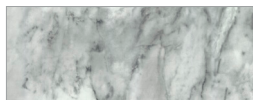
Tiles are cast from Class A polyurethane foam, sanded by hand, and applied with a designer finish. Due to the artisanal nature each Kuvio tile is unique and imperfections are inherent in the design.



Coverage / Tile	0.6 sf.
Coverage / Case	14.4 sf.
Tile Base Size	17.32" x 10"
Thickness	1.45"

Approx. Weight / Case	20 lbs.
Case Size	28.5" x 20.5" x 10.5"
Approx. Weight / Tile	1 lb.
Tiles / Case	24

## AVAILABLE FINISHES



Grigio Marble



Bianco Marble



Cotton



Concrete



Carbon Cedar



Walnut



Rustic Elm



Nantucket



Maple



Shadow



Shimmer Ash



Zinc

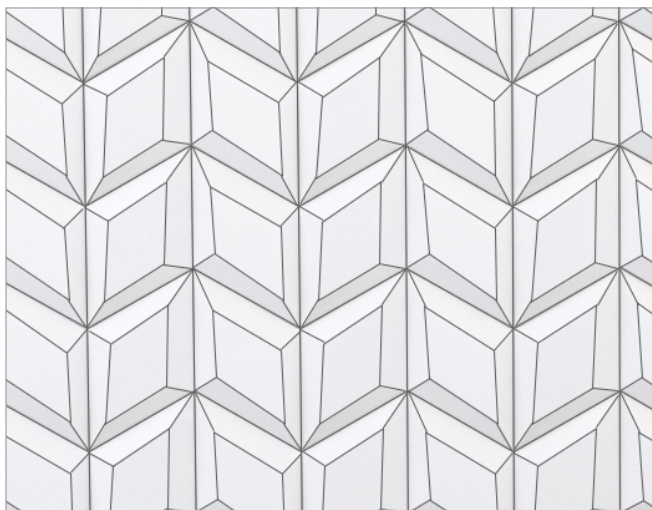


Oxide

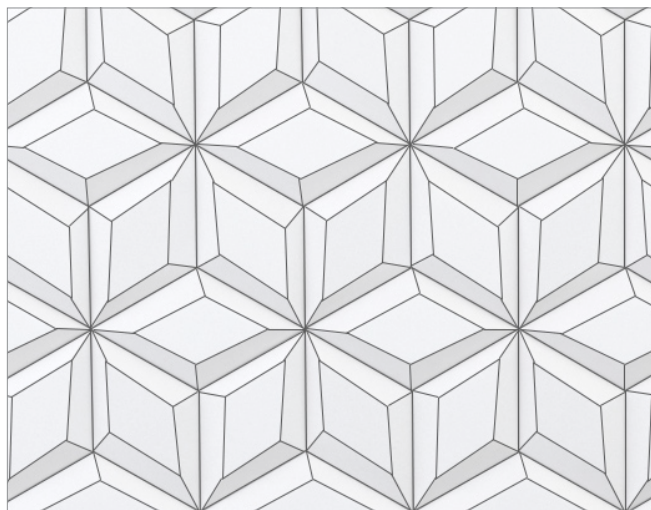


Titanium

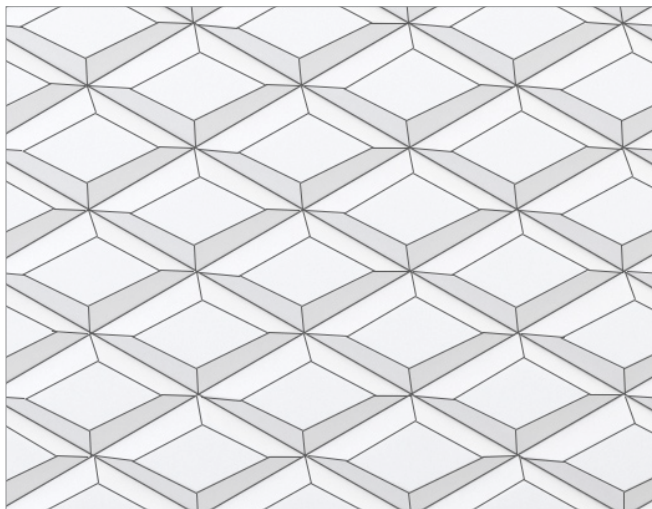
## POINT SAMPLE PATTERNS



Chevron



Radial



Stack