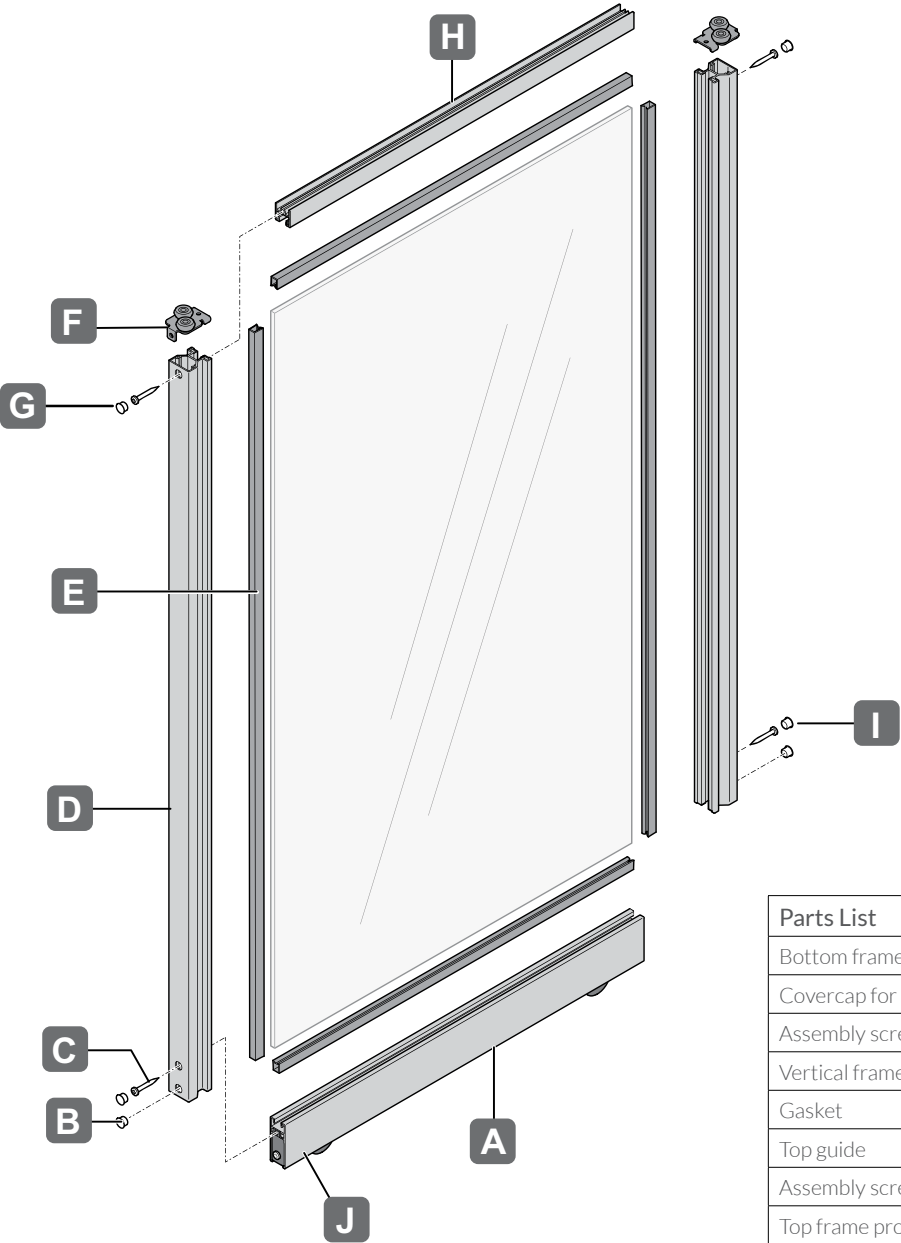


FRAME SLIDING DOOR SYSTEM

ASSEMBLY - OVERVIEW



Parts List	
Bottom frame profile	A
Covercap for height adjustment access hole	B
Assembly screw	C
Vertical frame profile	D
Gasket	E
Top guide	F
Assembly screw	G
Top frame profile	H
Covercap for assembly screw	I
Bottom running gear	J



## ASSEMBLY - STEP 1

### Note:

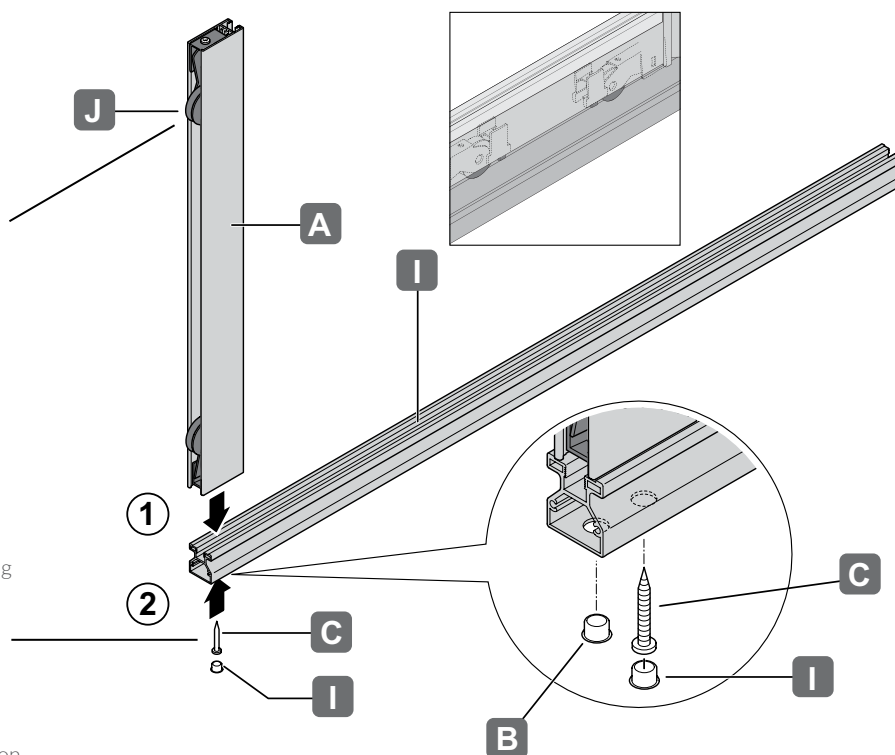
Insert bottom running gear by sliding into bottom frame profile prior to assembling the vertical frame profile.

### Note:

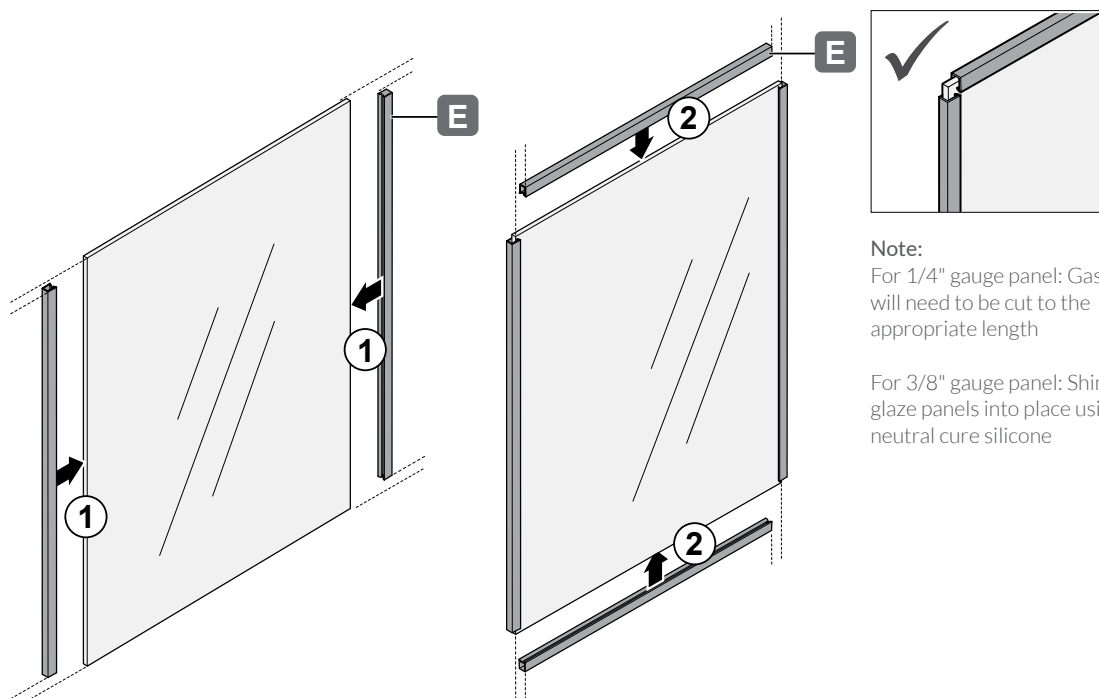
1. Insert screws. Ensure they line up with female screw bosses.
2. Manually tighten screws until mating profiles make contact.
3. Turn screwdriver one quarter turn (after mating parts make contact).

### Do Not:

1. Over-tighten screws.
2. Use power tools for screw installation.



## ASSEMBLY - STEP 2

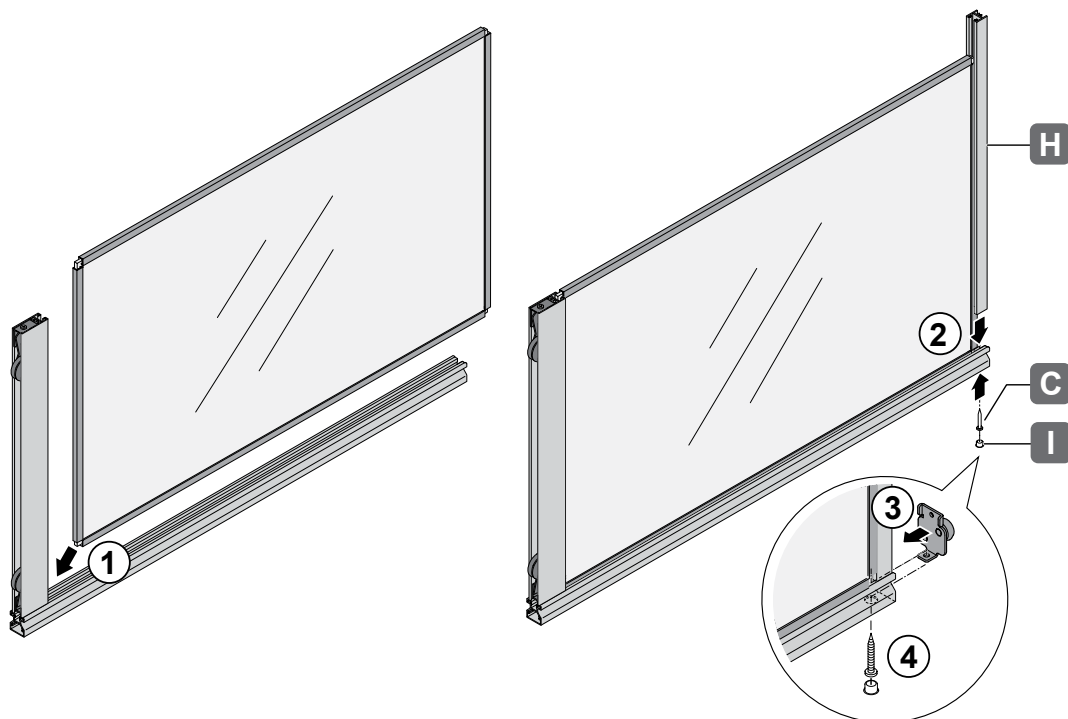


### Note:

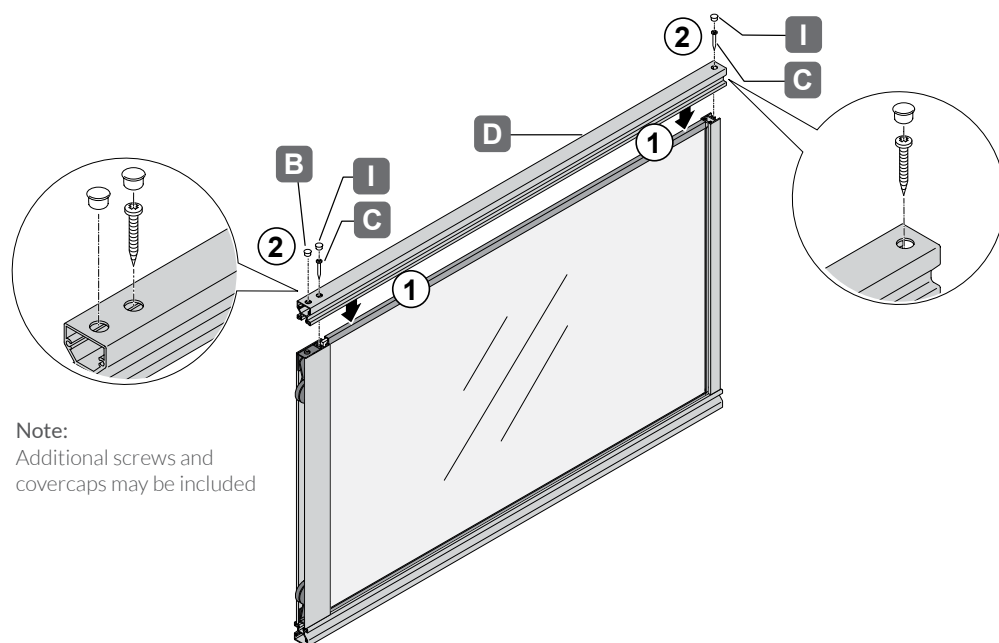
For 1/4" gauge panel: Gaskets will need to be cut to the appropriate length

For 3/8" gauge panel: Shim and glaze panels into place using a neutral cure silicone

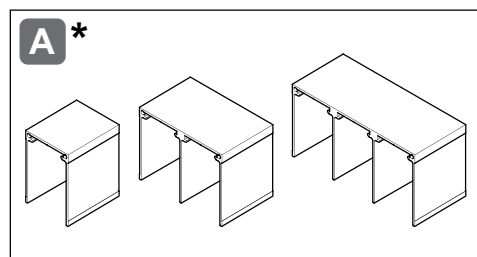
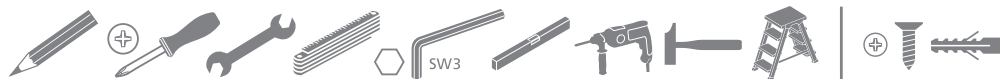
### ASSEMBLY - STEP 3



### ASSEMBLY - STEP 4



### INSTALLATION - OVERVIEW



**B**

**C\***

#### Parts List

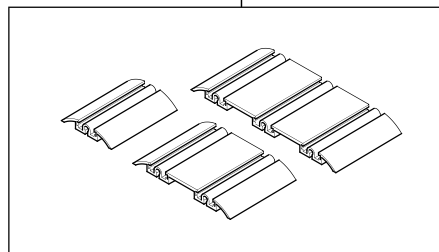
Top Guide Tracks	A
Wall Mounting Bracket	B
End Bracket for Guide Tracks	C/D
Bottom Running Track	E
Cover Cap for Single Bottom Running Track	F

**A\***

**D**

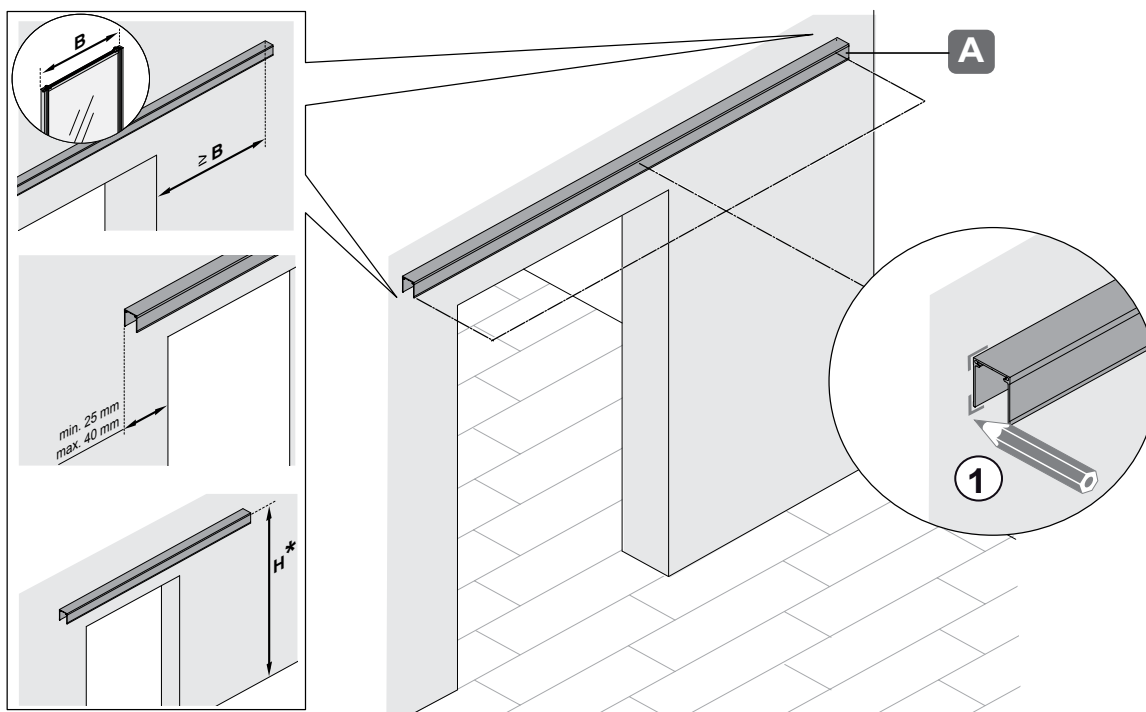
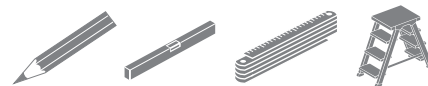
**E\***

**F\***

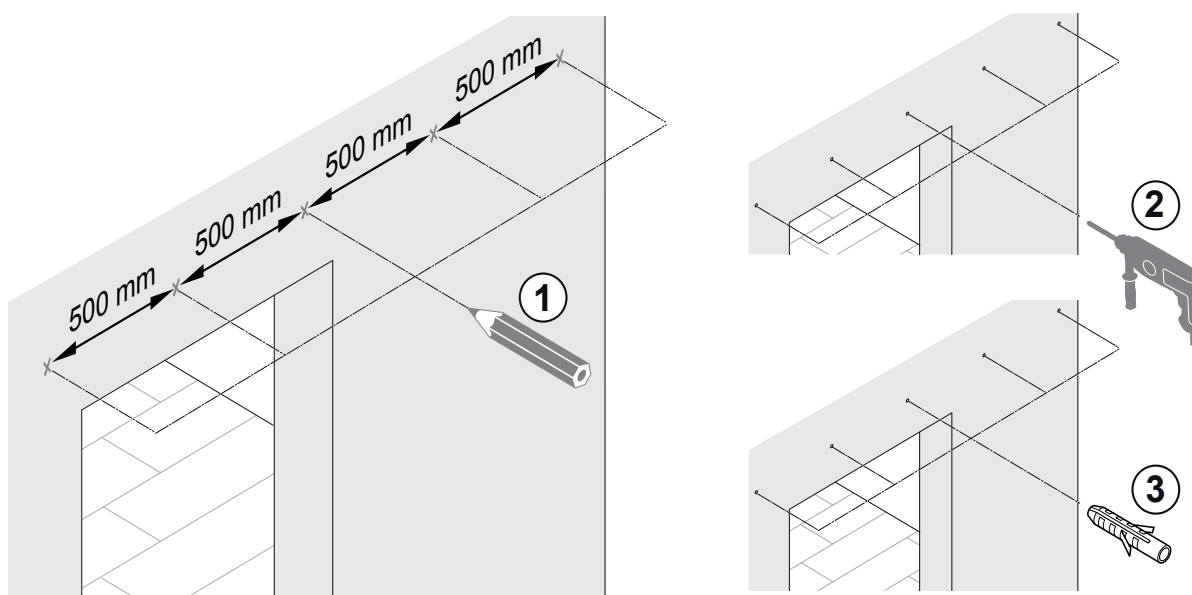


\*Version depends on the order. Single, double and triple tracks are available

### INSTALLATION - MOUNTING: BARN DOOR - STEP 1

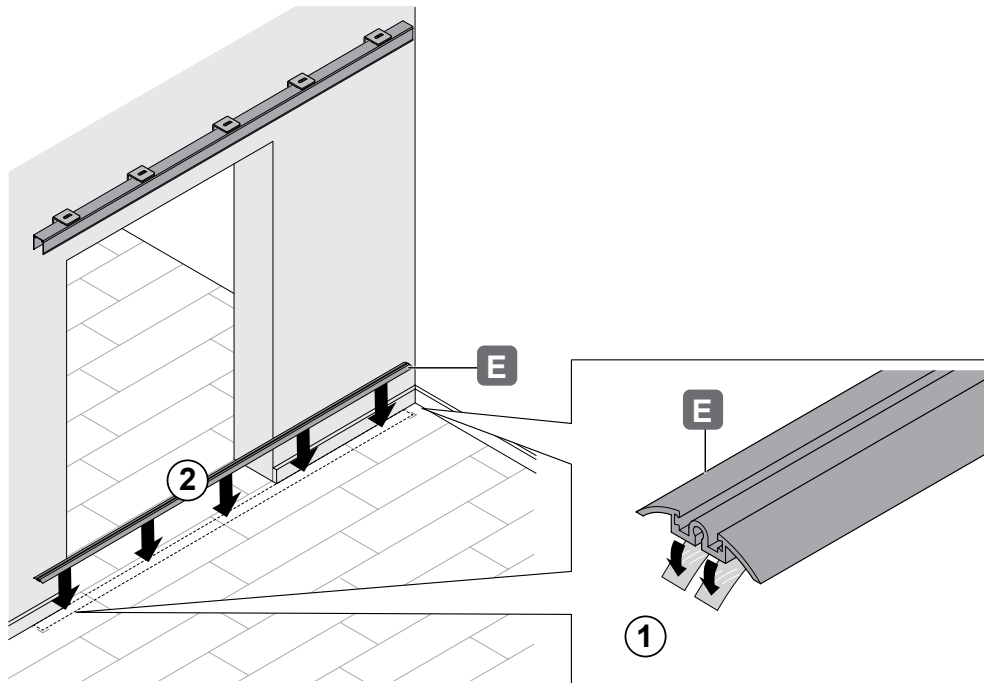


### INSTALLATION - MOUNTING: BARN DOOR - STEP 2

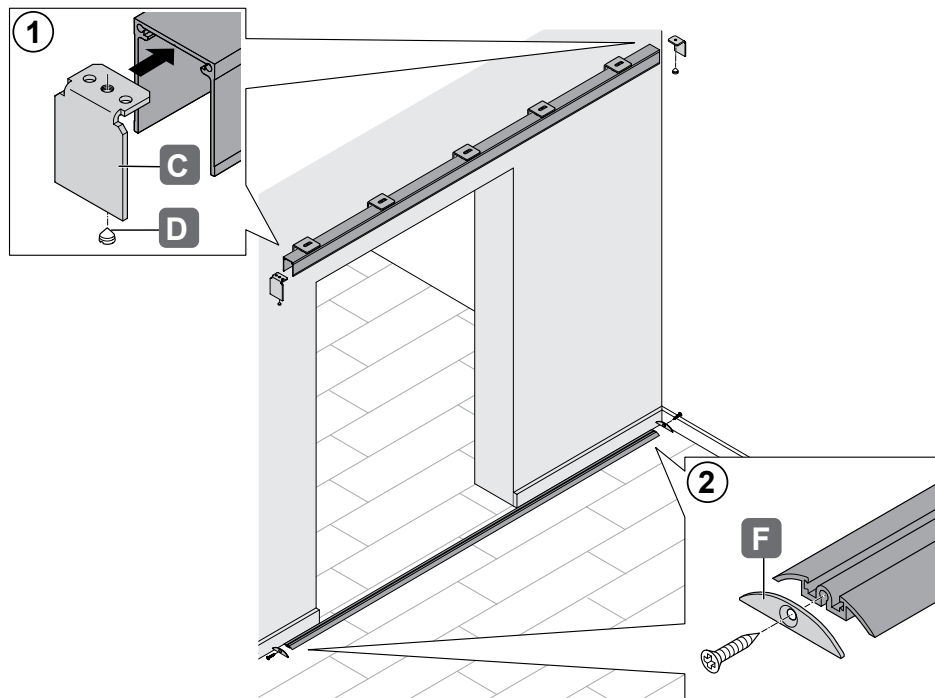


\* Installation height H depends on door dimensions

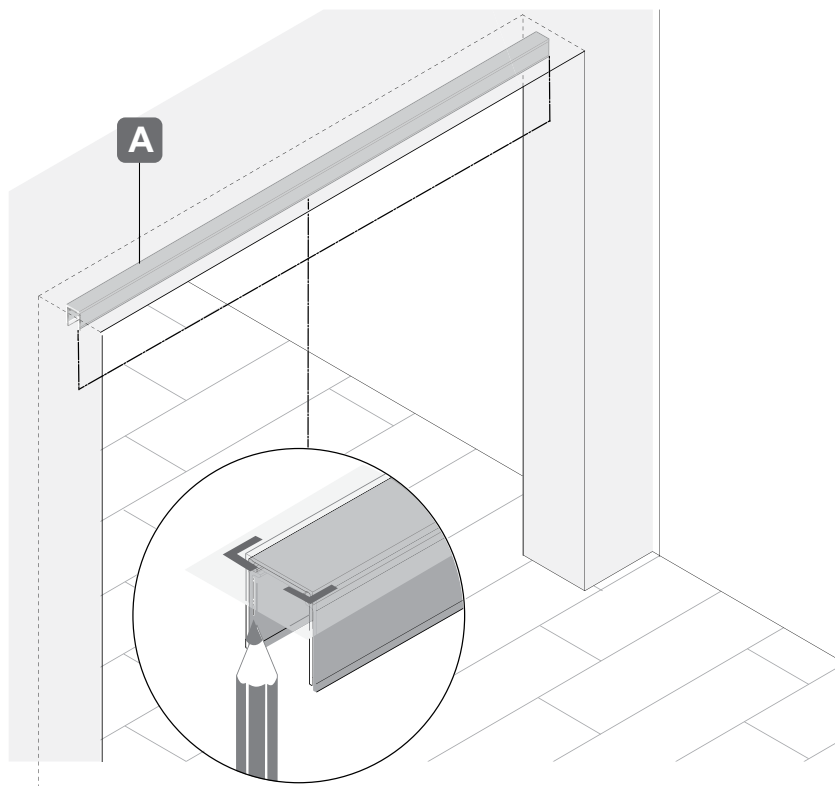
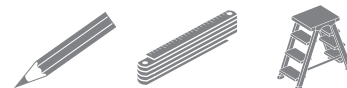
### INSTALLATION - MOUNTING: BARN DOOR - STEP 3



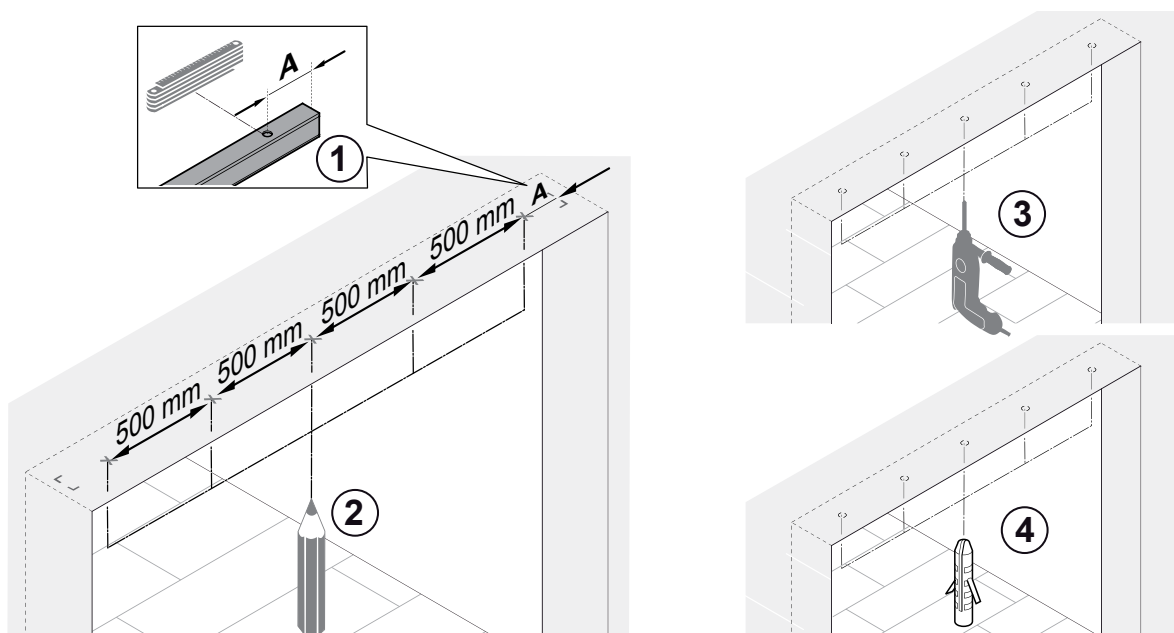
### INSTALLATION - MOUNTING: BARN DOOR - STEP 4



### INSTALLATION - MOUNTING: INSIDE OPENING - STEP 1

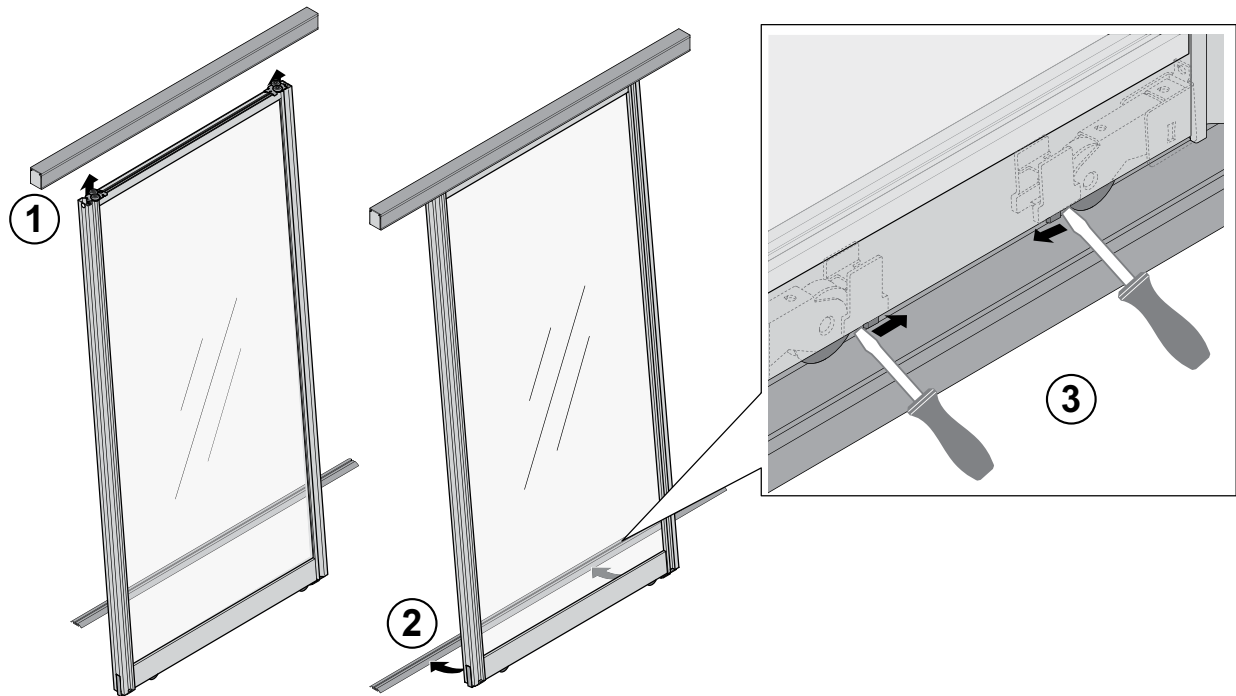


### INSTALLATION - MOUNTING: INSIDE OPENING - STEP 2

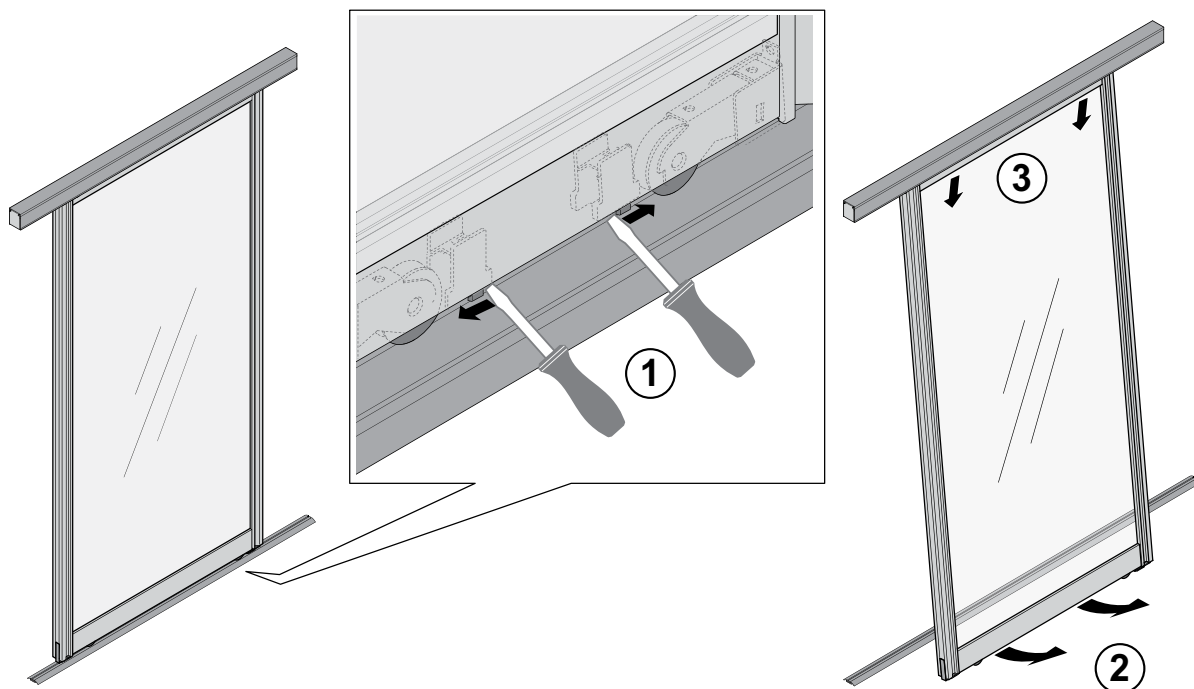




### INSTALLATION - INSTALLING DOOR

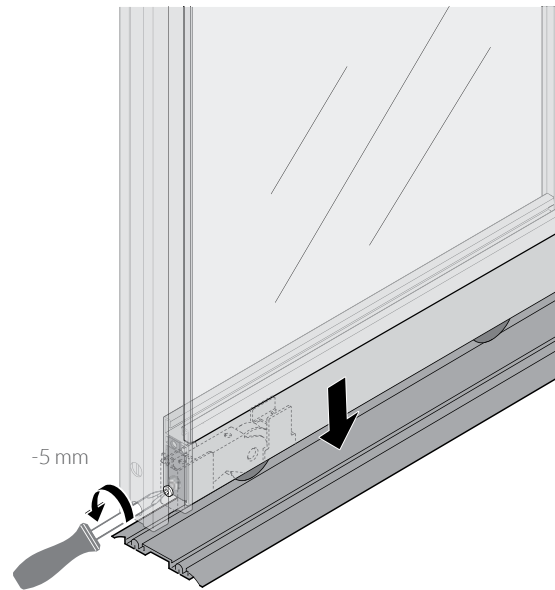
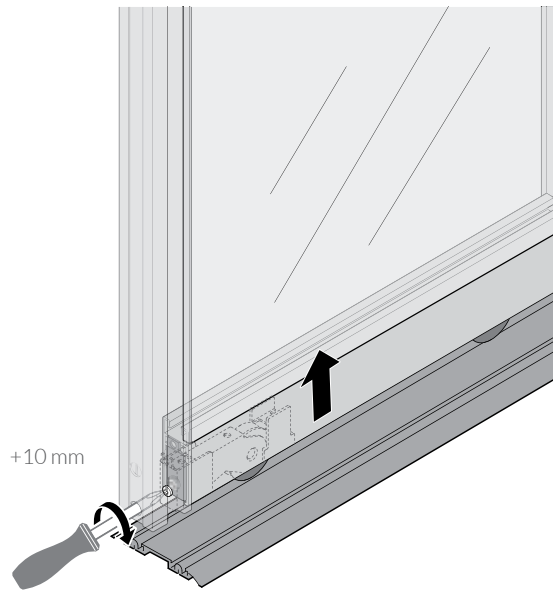


### INSTALLATION - REMOVING DOOR

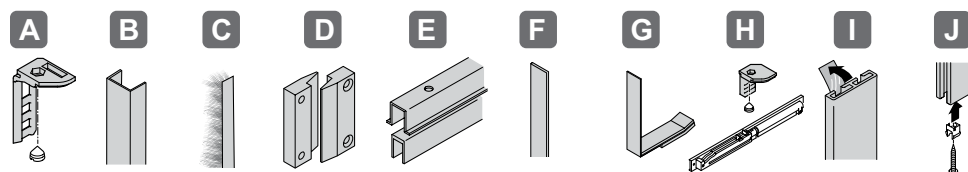




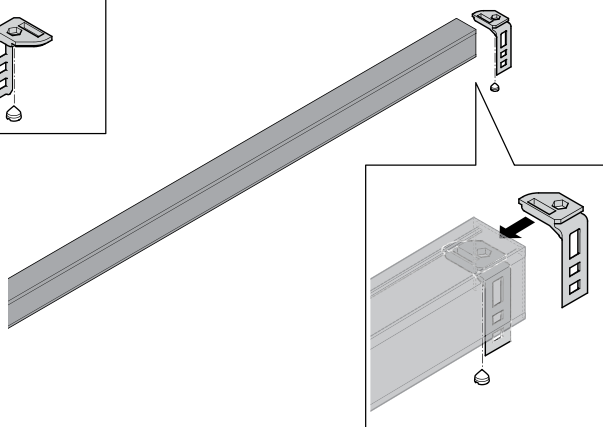
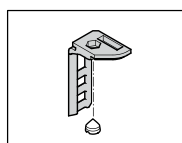
### ADJUSTMENT



## ACCESSORIES - OVERVIEW



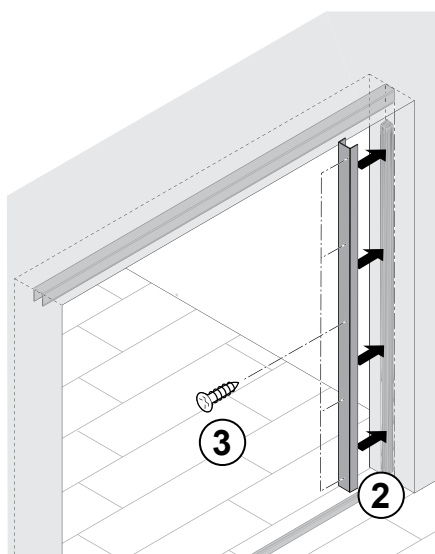
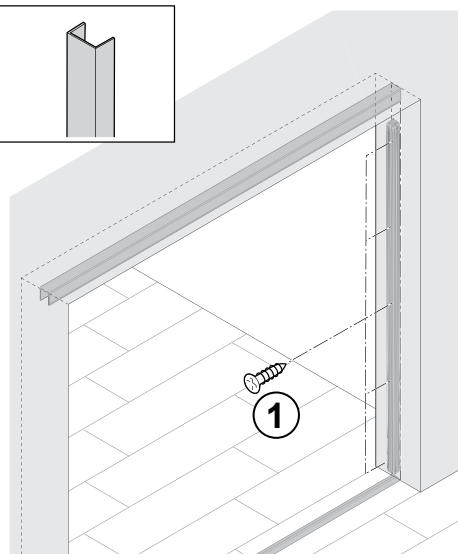
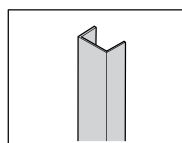
### A - CENTER DOOR STOPPER



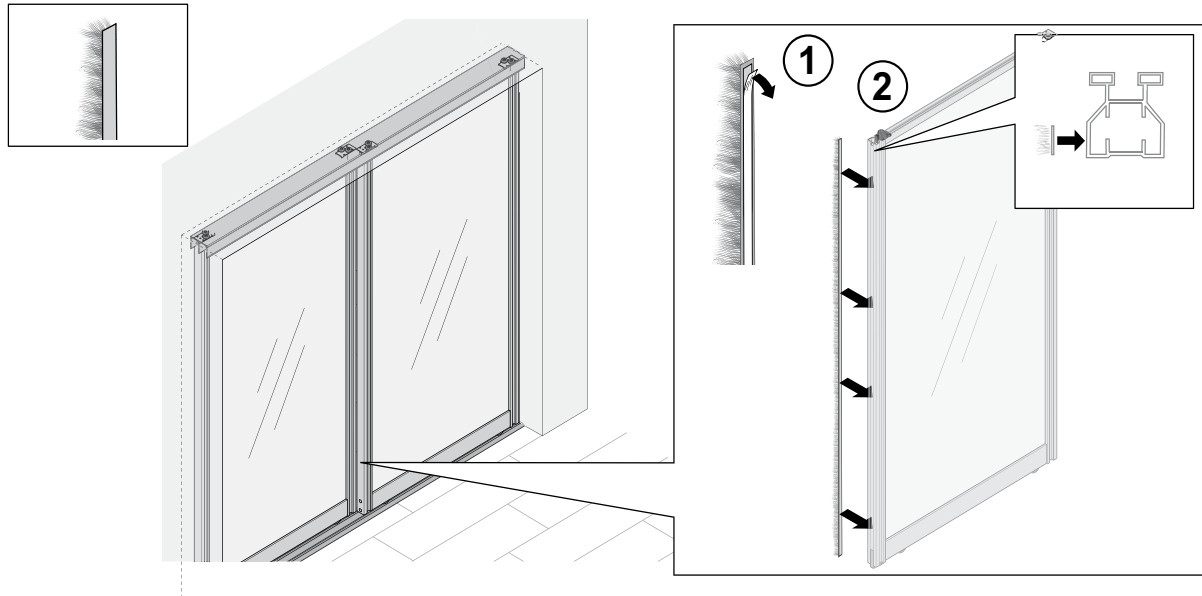
#### Accessories List

Center Door Stopper	A
Wall Compensating Profile	B
Brush Seal	C
Door Follower	D
Fixed Door Panel Components	E
Sealing Profile	F
Track Cleaning Brush	G
Soft Closer	H
Decorative Mullion	I
Mullion	J

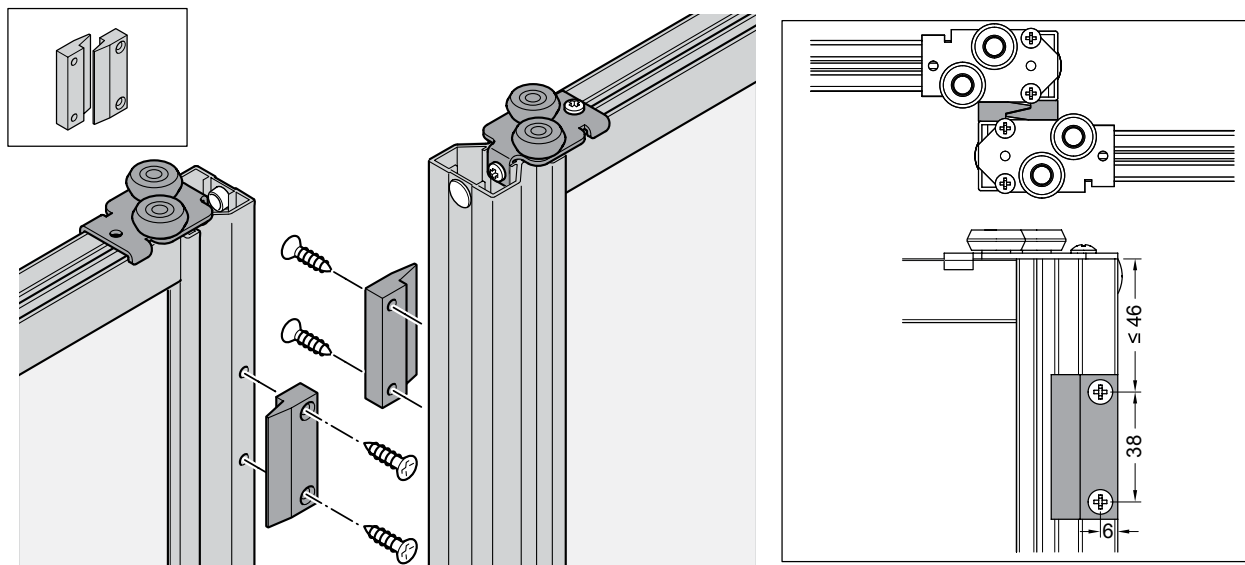
### B - WALL COMPENSATING PROFILE



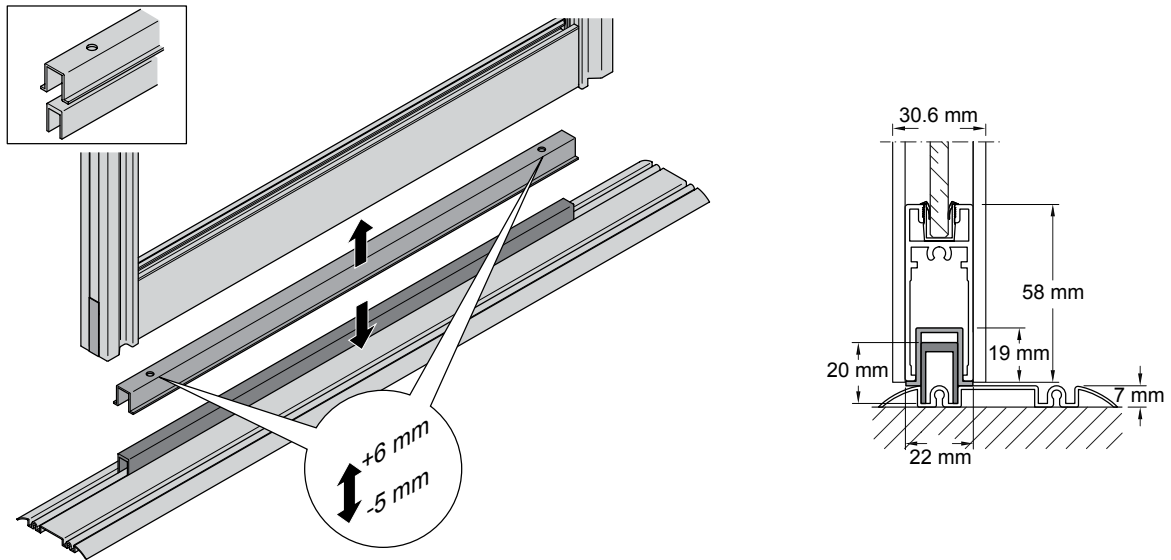
### C - BRUSH SEAL



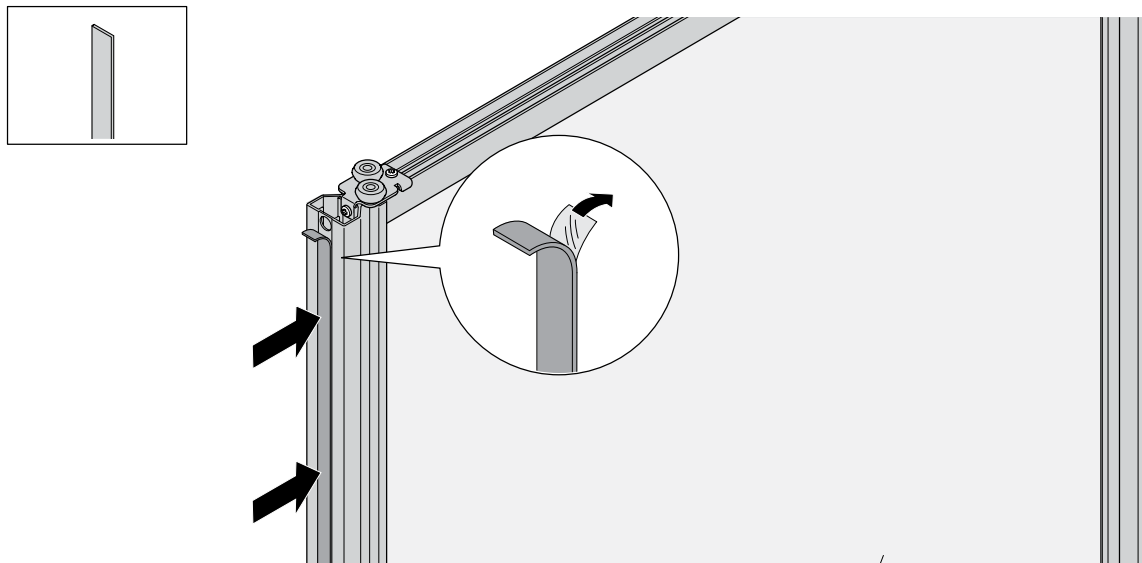
### D - DOOR FOLLOWER



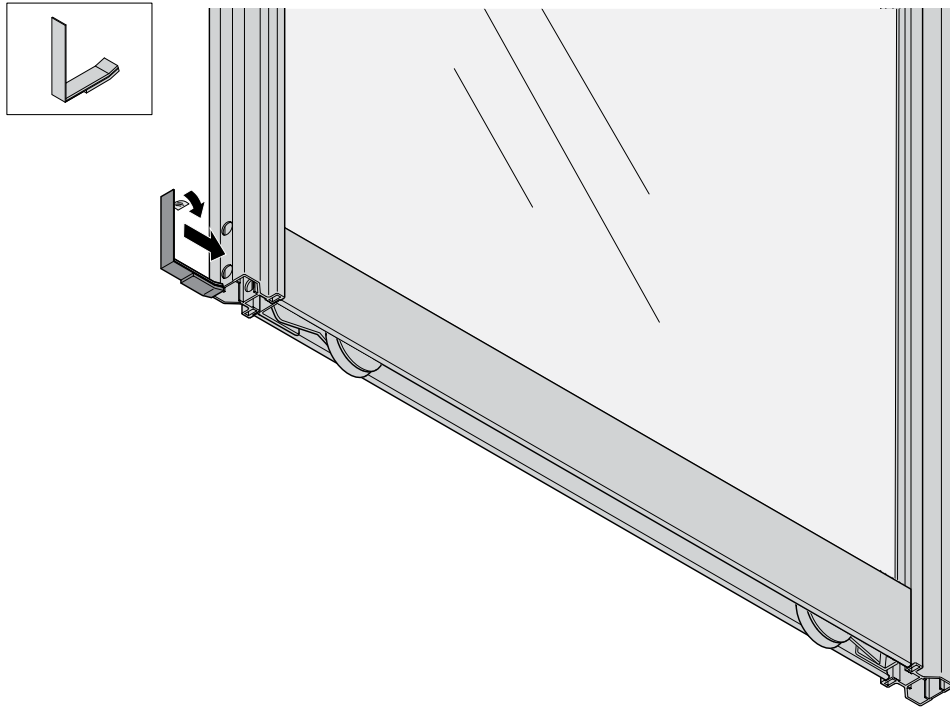
## E - FIXED DOOR PANEL COMPONENTS



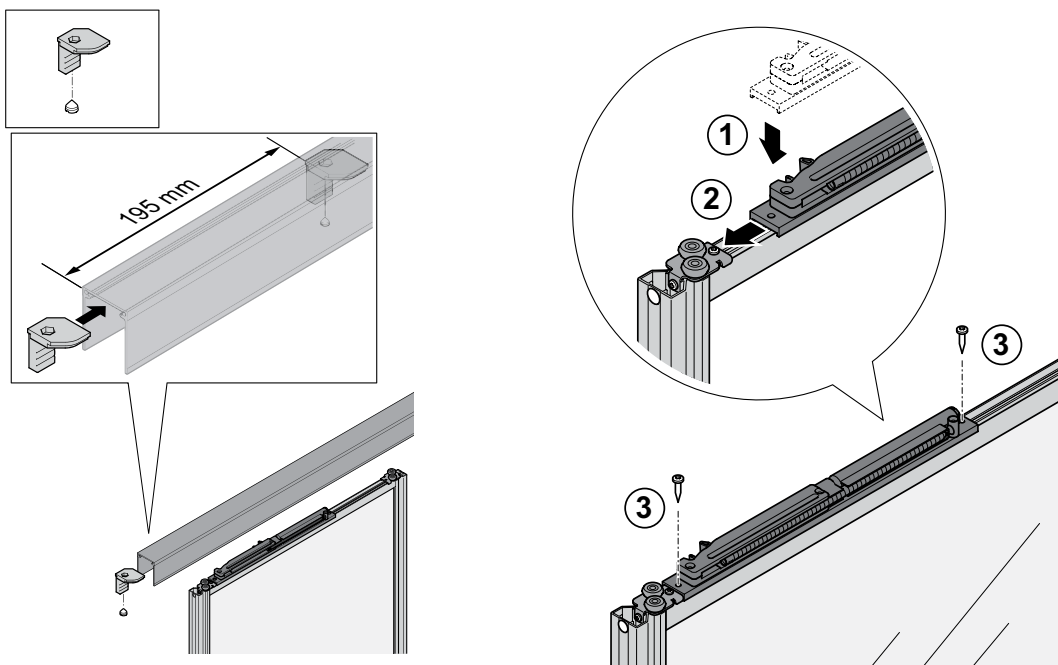
## F - SEALING PROFILE



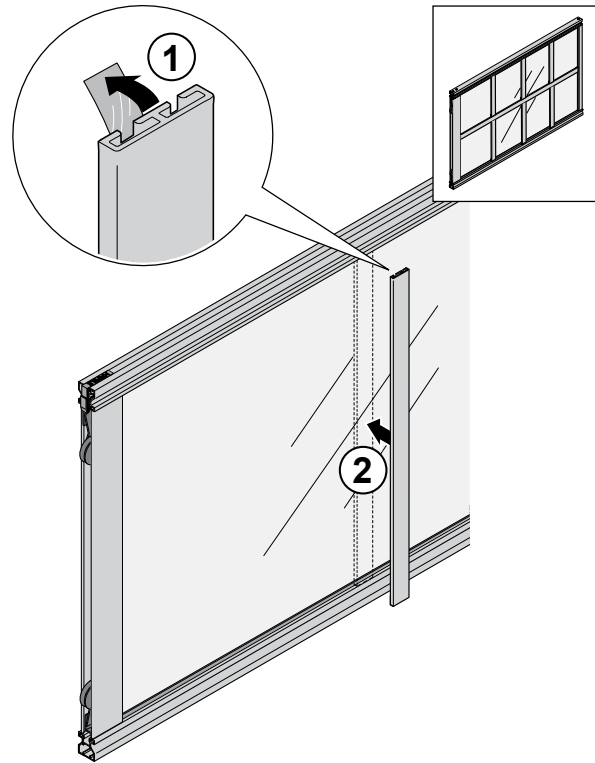
## G - TRACK CLEANING BRUSH



## H - SOFT CLOSER



### I - DECORATIVE MULLION



### J - MULLION

